

ProJoe



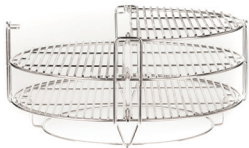
Features & Components



Kontrol Tower Top Vent



Air Lift Hinge



Divide & Conquer® System



Charcoal Basket



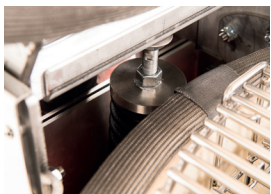
Stainless Steel Latch



Grill Grates



Stainless Steel Handle

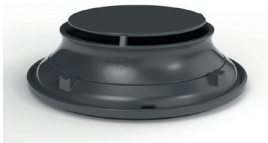


Gasket

INTERNAL COMPONENTS



FireBox



Patented Hyperbolic Insert



Patented Ash Collector



Thermometer

Specifications

Dimensions	Cooking Surface	Weight	Heat Range
28.4 in W x 43.7 in H x 35.5 in D	24 in Diameter / 864 sq in	507 lbs	225°F – 750°F+
72.2 cm W x 111 cm H x 90.2 cm D	61 cm Diameter / 5,558 sq cm	230 kg	82°C – 399°C

Materials

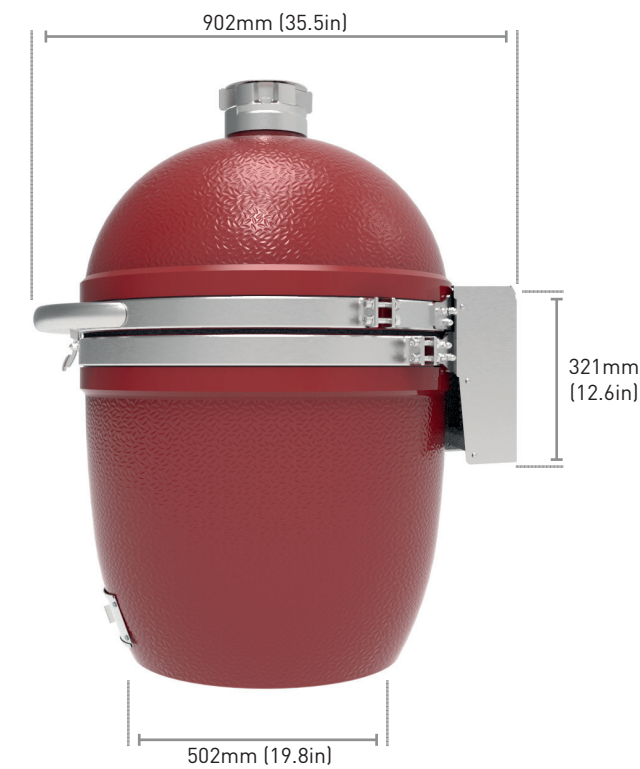
Base/Dome	High Fire Heat-Resistant Ceramics	Latch	304 Stainless Steel
Glaze	Heat-Resistant Ceramic Coating	Handles	304 Stainless Steel
Top Vent	304 Stainless Steel	Air Lift Hinge	Full Counter Balanced Stainless Steel
Grill Grates	304 Stainless Steel	Patented Ash Collector	304 Stainless Steel
FireBox	High-Fire Heat-Resistant Ceramics	Patented Hyperbolic Insert	Teflon Coated Cast Aluminium
Gasket	Wire Mesh Fiberglass	FireBox Ring	304 Stainless Steel

Dimensions & Installation Guide

IMPORTANT DIMENSION NOTES

Please use this as a general guide for installing a ProJoe ceramic grill in a built-in outdoor kitchen or grill table. Drawing is not to scale.

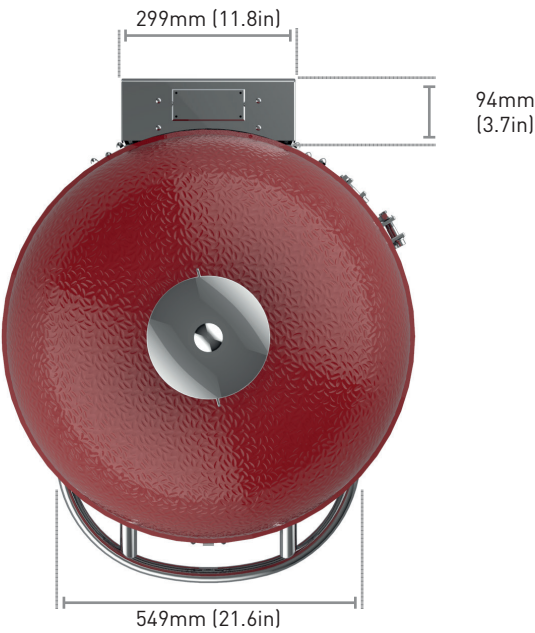
SIDE VIEW



FRONT VIEW



TOP VIEW





Distribuidor oficial para España:

The Barbecue Store

**Avda. Carmen Saenz de Tejada, 1
29650 Mijas Costa (Málaga)**

Teléfono: 952477152 - 952477161

Fax.: 952580781

Email: dmbrico2@telefonica.net

<http://www.thebarbecuestore.es>



KAMADOJOE®